

## Unifying Responders, Protecting Communities: Our Next-Generation Emergency Communication Solutions

Our emergency portfolio is geared towards public safety services. This sector targets vital services such as fire fighters, ambulance, and lifeboat teams. Within this portfolio, communication infrastructure like radios and encrypted networks are essential tools, enabling swift coordination among responders, enhancing response efficiency, and situational awareness.

Moreover, tailored telecommunication products ensure confidentiality and security in sensitive situations.



## Record with Confidence Anytime, Anywhere

### MISSION CRITICAL COMMUNICATION WITH POC CAPABILITY

Body-worn cameras have become an essential tool for first responders, providing crucial evidence and accountability in high-risk situations. Motorola Solutions offers two cutting-edge body-worn camera models, the VB400 and the V500, which are designed to meet the unique needs of these professionals.

### MOTOROLA BODY-WORN CAMERA V500

V500 is an advanced body-worn camera that offers enhanced connectivity and real-time intelligence features. The V500 boasts LTE functionality, enabling seamless communication and the ability to stream live video from the field. This can be particularly useful for emergencies, as it allows supervisors to monitor the situation and coordinate a more effective response.


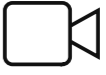


MOTOROLA  
SOLUTIONS

## Capture the Moment

VB400 is a rugged and reliable body-worn camera that offers features tailored for first responders. Its shift-long battery life ensures continuous recording during long shifts, while its IP67 ingress protection rating allows it to withstand the elements. VB400 also features secure mounting options that keep the camera firmly attached to the user's uniform.

One of the standout features of the VB400 is its ability to integrate with TETRA radios and holster sensors. When paired with a TETRA radio, the VB400 can be triggered to start recording immediately when the radio enters an emergency state. This ensures that critical footage is captured even in unexpected situations. Additionally, the VB400 can integrate with holster sensors, allowing it to start recording when the user's weapon is drawn.

-  Long battery life for full shift recording
-  Bluetooth® & Wi-Fi® connectivity
-  Full HD recording in 1080p
-  Flexible mounts accommodate all uniforms
-  GPS helps you keep eyes on your team
-  Encryption ensures video is unquestionable



MOTOROLA  
SOLUTIONS

# Stay Connected with Tetra Radios

Motorola Solutions offers two powerful TETRA radio solutions designed to keep first responders and emergency personnel connected and safe in the field:

MXM600 TETRA Mobile Radio provides reliable in-vehicle coverage for mission-critical voice and data communications.

## RELIABLE TETRA RADIOS FOR FIRST RESPONDERS

MXP660 is a rugged and lightweight TETRA portable radio with built-in LTE capabilities, designed to meet the demands of first responders. It ensures clear communication, even outside of TETRA coverage, with the option to ramp up to Class 3 TETRA transmission power and automatic switching to LTE or Wi-Fi broadband.



The radio features noise reduction technology trained through AI machine-learning, streamlines radio management with LTE and Wi-Fi over-the-air updates. With its ability to respond to sudden changes in the field and future changes in technology, the MXP660 helps equip your frontline staff to efficiently and effectively get the job done.



SAVOX

## Savox Hardline Rescue: All-in-one kit

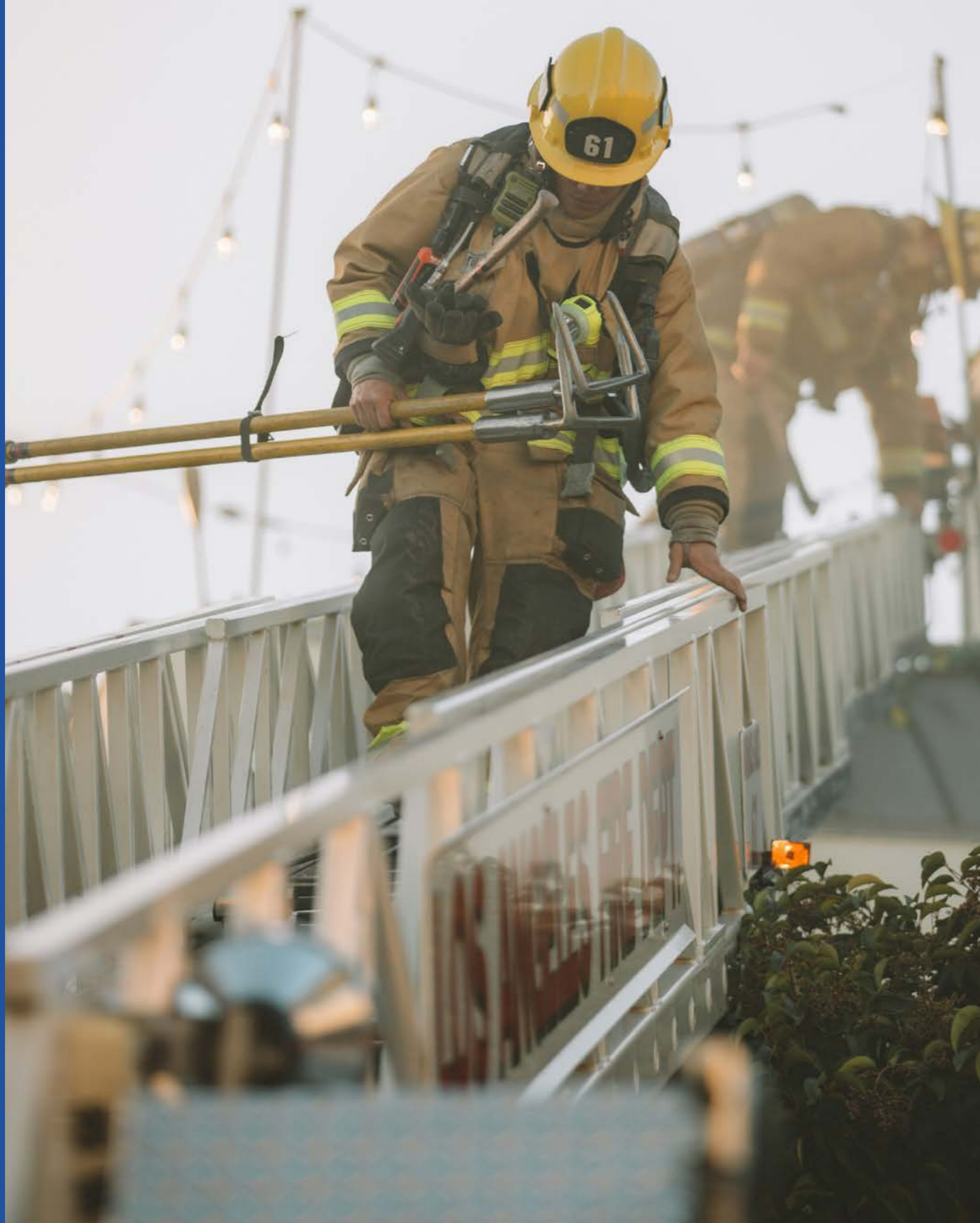
Savox Hardline Rescue Kits are technical rescue kits for confined spaces. The kits are designed for confined space rescue, collapse rescue, urban search and rescue and high angle rescue. The kits enable two-way communication between the rescue team and the victims.

### SAVOX HARDLINE RESCUE KIT 1 WITH POWER TALK BOX

Savox Hardline Rescue Kit 1 with Power Talk Box is our best-selling technical rescue confined space kit. It enables simultaneous, two-way voice communications between the rescuers and the victim. Rescuers use it where traditional radios fail or when hands-free, secured communications are required. Attendants can communicate with entrants and monitor their safety. The backup team can also listen to the entrants' rescue and be ready to relieve them.

#### KEY FEATURES

- » Hands-free two-way communication.
- » Water- and dustproof.
- » Tested to MIL standards (Rescue Kit 1.)
- » Field proven, used by FEMA, USAR and SUSAR teams (USAR Task Force Kit.)
- » Intrinsically safe for potentially explosive environments.



# Revolutionising Responder Communications with POC (Push-to-talk over cellular)

WAVE PTX is a subscription-based group communication service that seamlessly connects your team across different devices, networks, and locations, instantly enabling professional radio PTT communication with the ability to share details via text, photo, video, or file attachment. This broadband push-to-talk service extends the reach of your professional radio system, allowing you to connect more team members over a wider service area.

Push to Talk over Cellular (POC) solutions offer significant benefits to first responders by improving team communication, enhancing collaboration, and ensuring worker safety. These solutions can be applied in various scenarios to streamline communication and support coordinated efforts. Integration with other Motorola Solutions technologies further enhances communication capabilities, creating a solid communication ecosystem for organisations to operate efficiently and effectively.

A good example of solutions that can revolutionise emergency and security communication is Motorola's TLK 100, 110, 150, and TLK 25 Wi-Fi offerings. These products are designed to streamline your operations and ensure your team stays connected and productive, even in the most demanding situations.



## TRBOnet Control Room: Safety anywhere, anytime

**TRBOnet**  
Dispatch Systems

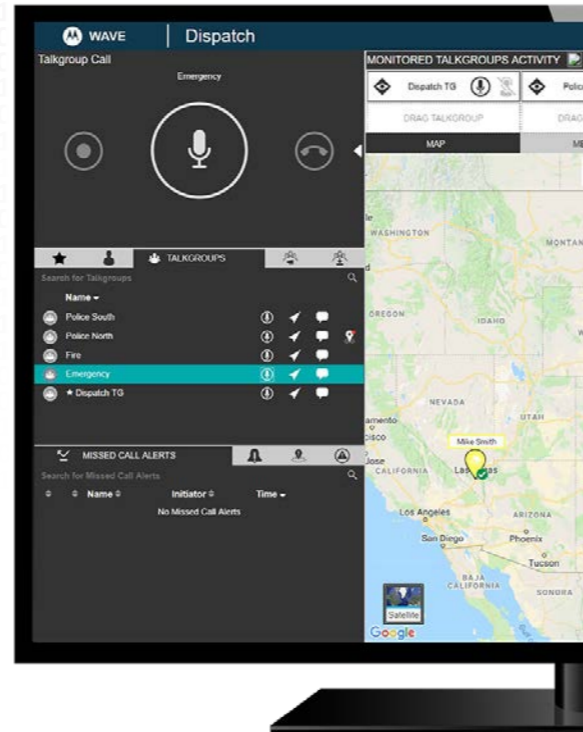
Experience TRBOnet Control Room is designed to revolutionise the operations of emergency responders. Enhance your response capabilities by incorporating advanced communication technologies to boost efficiency, coordination, and overall situational awareness.

Staffed by a team of skilled professionals, TRBOnet Control Room offers 24/7 support and rapid emergency responses, making it an essential tool for emergency responders looking to stay ahead in a competitive and dynamic environment. With functionalities such as movement detection, call logging, and staff monitoring, TRBOnet Control Room delivers a comprehensive solution to streamline communication, enhance safety protocols, and optimise operational efficiency across all aspects of emergency response. Elevate your operational efficiency with TRBOnet Control Room, the cutting-edge solution designed to propel your emergency response capabilities to new heights of success.



## WAVE PTX Dispatch

Motorola's WAVE PTX Dispatch simplifies day-to-day operations by providing centralised communications from any internet-enabled location. The cloud-based solution frees you from maintenance and software updates, allowing secure sign-in from anywhere. Stay in instant communication with your field personnel using push-to-talk, monitoring traffic and connecting with groups or individuals at the touch of a button. Integrated messaging capabilities let you share text, photos, videos and files to keep your team informed and improve coordination. Leverage the location tracking and mapping features to visualise your team's position and optimise your operations.



## Unmatched Connectivity

Evolve LTE handheld device combines the ruggedness of a two-way radio with the versatility of an Android smartphone, offering seamless connectivity across 3G, 4G, and Wi-Fi networks. With features like a glove-operable 5" touch screen, noise suppression microphones, and dedicated PTT and emergency buttons, this IP68-rated device ensures reliable communication in any environment.

The Android platform with an open app ecosystem provides a familiar user experience, making it easy to adapt to and integrate with existing systems. Whether you need to communicate in the loudest environments or make informed decisions on the fly, Evolve LTE is your ideal companion.



**MOTOROLA**  
SOLUTIONS





## Maximise your Reach: Long-range acoustic devices with the Genasys

LRAD is a vital tool for emergency responders, who must make way to reach their destination as fast as possible and alarm civilians around them. This long-range communication device is designed to project clear voice messages and warning tones over significant distances, ensuring effective communication with bystanders in high-risk situations.



*LRAD Mobile Sound Shield is a robust 360° vehicle security and communication system specifically designed for responder vehicles. This system broadcasts warning tones and voice commands up to 100 meters in all directions, providing a safe and effective means of communication and security for emergency responders operating in high-risk environments.*

100m

328ft

RANGE

## Hand-Portable Device

The LRAD 100X is a valuable tool for emergency responders that allows you to communicate clearly and effectively, even in noisy or chaotic situations. This hand-portable device is ideal for use by first responders, law enforcement, and other emergency personnel in a variety of scenarios.



600m

1968ft

RANGE



**Genasys™**

Communication. Critical to saving lives.



# Safety Advantages: Boost Your Efficiency with Motorola Radios

## COMMUNICATION SOLUTIONS FOR ANY EMERGENCY

MOTOTRBO R7 is a modern digital two-way radio designed to meet the critical communication needs of emergency responders. It offers unparalleled performance, connectivity, and safety features, including a UHF/VHF frequency range, up to 28 hours of battery life, and an IP68 waterproof rating for durability in harsh environments.

MOTOTRBO Ion is a smart radio and the ultimate communication device for emergency responders. It provides always-on voice and broadband data capabilities, an open Android app ecosystem for critical applications, and a rugged, IP68-rated design that can withstand tough conditions. The Ion also features built-in emergency buttons, GPS tracking, and multi-layer security to keep your team safe and connected.

Both the MOTOTRBO R7 and Ion are designed to meet the evolving needs of emergency responders, offering cutting-edge technology and features that enhance connectivity, productivity, and safety in critical situations.

MOTOTRBO  
**R7**



MOTOTRBO  
**ION**

# No Compromises in your Communication

MOTOTRBO DM4000e Series presents a dynamic evolution of digital two-way radios designed for skilled professionals who refuse to compromise. Key features include Bluetooth audio for wireless communication, integrated Wi-Fi for remote software updates, and indoor and outdoor location-tracking capabilities for total visibility of resources.



These radios also prioritise safety with responsive push-to-talk technology, quick access buttons for emergency assistance, and safe driving accessories for hands-free communication. Furthermore, they support advanced applications with text messaging and Work Order Ticketing, and feature a high-power audio amplifier with background noise cancellation for clear speech. The DM4000e Series is ideal as a dispatcher solution, with desktop microphones and a rugged, durable design for everyday use.

**Danimex Communication A/S**  
Elholm 4 · DK-6400 Sønderborg · Denmark  
Phone: +45 7342 5600 · Fax: +45 7342 5615  
danimex@danimex.com www.danimex.com

**Danimex SA Holding (Pty.) Ltd.**  
Unit 23 · Midline Business Park · Gauteng  
Midrand · South Africa  
Phone: +27 (0)10 596 7135 · sa@danimex.com

