



HyphaMESH solutions offer an IP transparent network, based on the COFDM waveform, that can operate independently or integrate back to a central core, wider network or the internet. This extends coverage for Wi-Fi enabled devices, sensors and cameras into challenging environments such as back country, urban or underground areas of operation.

The software defined COFDM Mesh radio network is capable of high data throughput with multiple frequencies up to 6GHz available. The elements of the HyphaMESH solution are the HyphaCAP, HyphaMAP, HyphaNODE and HyphaPTT units, along with the application layer that they enable.

Solution Elements & Use Cases

hypha CAP



- CAP (Communications Access Point)
- Portable MESH device
- Connects to smart devices via Wi-Fi

hypha PTT



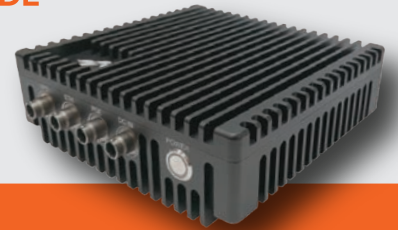
- Portable terminal form factor
- Mesh PTT radio

hypha MAP



- Vehicle, Airborne or Fixed mounted
- Connects Wi-Fi capable devices

hypha NODE



- Vehicle, Airborne or Fixed mounted
- Configurable up to 10W power output

HyphaMESH is able to:

- Maintain connectivity when in terrain with no coverage
- Keep team members in communication with each other and their command centre
- Create an IoP (Internet of People) network that can transmit biometrics, location, and data from other sensors
- Enable direct mode communications between smart devices
- Be rapidly deployed with no need for fixed infrastructure

Usage scenarios:

- Fire fighters in a building without power or connectivity
- Tactical teams on in-building operations
- Urban Search and Rescue (USAR)
- Remote area firefighting beyond network coverage
- Boarding parties searching a ship interior
- Disaster recovery teams where existing infrastructure has been destroyed

HyphaCAP Features



**GOOD
DESIGN
AWARD®
WINNER**



**Karabiner and belt clip
for easy portability and
secure attachment**

**Internal battery
provides up to 6 hours
of operation**

**Rugged case, IP67
rated**

**Hot swap battery for
up to 6 hours of
operation**

**LED indicator for
signal strength and
battery level**

**Charging options –
travel clip or desk dock**

**Reliable connectivity by extending
coverage to the edge of current networks
– and beyond**



For further information, please contact sales@hypha.world or visit www.hypha.world